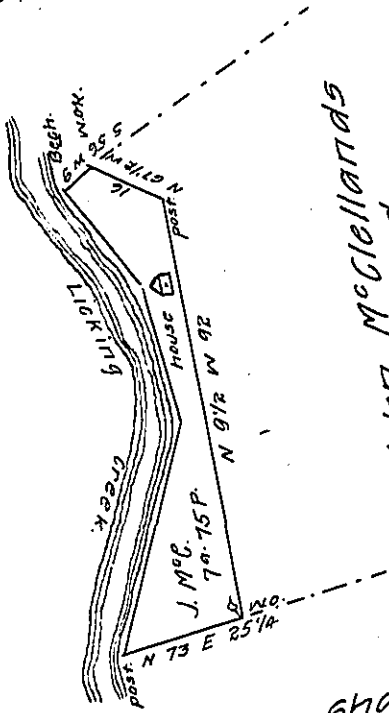


Wm. Street
in right of
Jas. Rodman

Lands of J^r^d
Hamilton



John McClelland's
other land

George Shavers
Land.

Courses & Distance
down Licking creek
from Beech

- S 38 E 26
- S 17 E 30
- S 13 W 51/2. to a post

Ⓐ Note, a dwelling house

A Draught of a tract of land situate in Milford township Mifflin County containing seven acres & 75 perches and the allowance of six p. Cent for roads &c. Survey^d for John McClelland the 10th day of October 1799. In pursuance of a warrant dated the 28th day of November 1798

Ⓐ William Harris. D.S.

To Daniel Brodhead Esquire
Surv. Gen^l of Pennsylvania

IN TESTIMONY that the above is a copy of the original remaining on file in the Department of Internal Affairs of Pennsylvania, made conformably to an Act of Assembly approved the 16th day of February 1833, I have hereunto set my hand and caused the Seal of said Department to be affixed at Harrisburg, this third day of April 1908.

Henry Howell
Secretary of Internal Affairs.